



FALAKNAZ GREENS

3, 4 & 5 ROOM
APARTMENTS

MAIN SHAHRAH-E-FAISAL

ADJACENT TO
SHAMSI SOCIETY

FALAKNAZ GREENS

A L U S H L I F E S T Y L E



ABOUT PROJECT

Falaknaz Greens host iconic-style building. Offering gracious, high-rise apartment living. Falaknaz Greens render a unique, premium new standards and better homes. The apartment range is from two-bedrooms to five-bedrooms flexible enough to please a range of needs and lifestyle. At the pinnacle of effortlessly redefining modern architecture and contemporary living combines the cosmopolitan appeal with a blend of style and trend.

Falaknaz Greens is situated at the prime location in the premises of "Shamsi Society" just near the Magnificent "shahrah-e-Faisal" and 10 minutes' drive from "jinnah International Airport". Falaknaz Greens offers you with the visionary lifestyle experience with spacious Bedrooms, Luxurious Bathrooms and International Standard Kitchens.

WE SHAPE LUXURY IN EACH DETAIL



INTERIOR THAT SPEAKS OF ITS ELEGANCE



PAYMENT SCHEDULE

TYPE - A

| DESCRIPTION | AMOUNT |
|--|--|
| On Booking | 2,917,200 |
| On Confirmation (After 30 days from the date of Reservation) | 972,400 |
| On Start of Work | 972,400 |
| On Allocation | 972,400 |
| Monthly Installment | <div>160,000 x 48</div> <div>7,680,000</div> |
| Half Yearly Installment | <div>150,000 x 8</div> <div>1,200,000</div> |
| On Plinth | 1,030,900 |
| On Block Masonary | 1,030,900 |
| On Roof Casting | 1,030,900 |
| On Plaster | 1,030,900 |
| On Possession | 610,000 |
| Total Amount | 19,448,000 |

Extra Charges:

WEST OPEN: RS. 250,000/-

CORNER: RS. 250,000/-

ROAD FACING: RS. 250,000/-

- Important Notes:
- All Installment must be paid by the allottees as per payment schedule agreed by the allottee between 1st to 10th of each month, and allottee shall abide by the terms & condition as mentioned in the Booking / Application form.
 - All Extra charges will be paid within 180 days from the Date of Booking.
 - Documentation charges for lease, and Connection charges of gas, electricity, water & sewerage etc, will be charged separately as and when demanded by the company as these charges are not included in the above mentioned Cost.
 - The Allocation of the unit shall remain Provisional until the company receives Full & Final Payments.
 - All discount will be valid subject to regular payments and shall be applicable at the time of possession.

| | | |
|-----------|------------------|-----------------------------|
| Date | Unit No. | Read, Understand & Accepted |
| Booked by | Project Incharge | Approved by Management |



PAYMENT SCHEDULE

TYPE - B

| DESCRIPTION | AMOUNT |
|--|--|
| On Booking | 2,101,200 |
| On Confirmation (After 30 days from the date of Reservation) | 700,400 |
| On Start of Work | 700,400 |
| On Allocation | 700,400 |
| Monthly Installment | <div>115,000 x 48</div> <div>5,520,000</div> |
| Half Yearly Installment | <div>125,000 x 8</div> <div>1,000,000</div> |
| On Plinth | 710,000 |
| On Block Masonary | 710,000 |
| On Roof Casting | 710,000 |
| On Plaster | 710,000 |
| On Possession | 445,600 |
| Total Amount | 14,008,000 |

Extra Charges:

WEST OPEN:

RS. 200,000/-

CORNER:

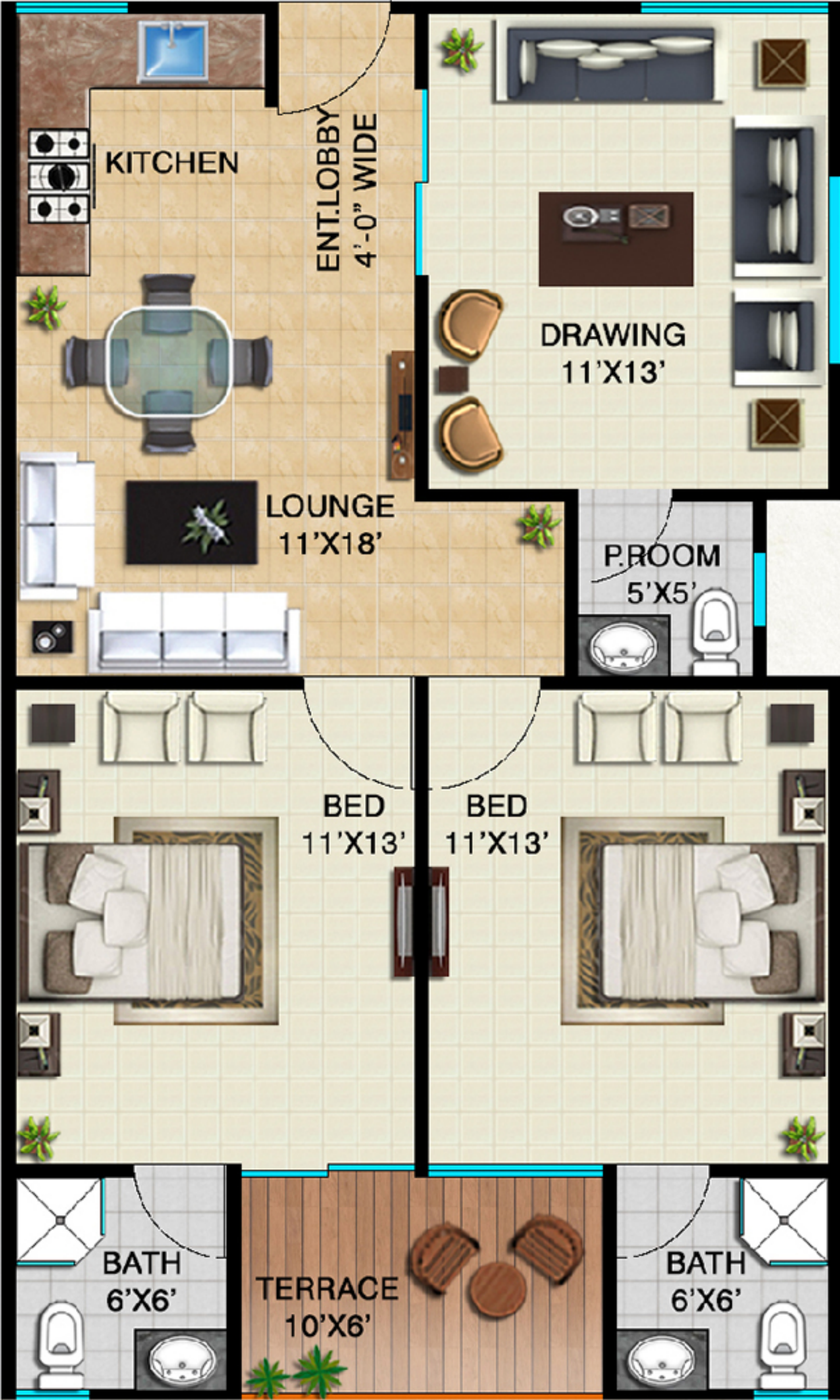
RS. 200,000/-

ROAD FACING:

RS. 200,000/-

- Important Notes:
- All Installment must be paid by the allottees as per payment schedule agreed by the allottee between 1st to 10th of each month, and allottee shall abide by the terms & condition as mentioned in the Booking / Application form.
 - All Extra charges will be paid within 180 days from the Date of Booking.
 - Documentation charges for lease, and Connection charges of gas, electricity, water & sewerage etc, will be charged separately as and when demanded by the company as these charges are not included in the above mentioned Cost.
 - The Allocation of the unit shall remain Provisional until the company receives Full & Final Payments.
 - All discount will be valid subject to regular payments and shall be applicable at the time of possession.

| | | |
|----------------------------------|---|--|
| <div></div> <div>Date</div> | <div></div> <div>Unit No.</div> | <div></div> <div>Read, Understand & Accepted</div> |
| <div></div> <div>Booked by</div> | <div></div> <div>Project Incharge</div> | <div></div> <div>Approved by Management</div> |



PAYMENT SCHEDULE

TYPE - C

| DESCRIPTION | AMOUNT |
|--|---|
| On Booking | 1,499,400 |
| On Confirmation (After 30 days from the date of Reservation) | 499,800 |
| On Start of Work | 499,800 |
| On Allocation | 499,800 |
| Monthly Installment | <div>75,000 x 48</div> <div>3,600,000</div> |
| Half Yearly Installment | <div>90,000 x 8</div> <div>720,000</div> |
| On Plinth | 600,000 |
| On Block Masonary | 600,000 |
| On Roof Casting | 600,000 |
| On Plaster | 600,000 |
| On Possession | 277,200 |
| Total Amount | 9,996,000 |

Extra Charges:

WEST OPEN: RS. 150,000/- CORNER: RS. 150,000/- ROAD FACING: RS. 150,000/-

Important Notes:

- All Installment must be paid by the allottees as per payment schedule agreed by the allottee between 1st to 10th of each month, and allottee shall abide by the terms & condition as mentioned in the Booking / Application form.
- All Extra charges will be paid within 180 days from the Date of Booking.
- Documentation charges for lease, and Connection charges of gas, electricity, water & sewerage etc, will be charged separately as and when demanded by the company as these charges are not included in the above mentioned Cost.
- The Allocation of the unit shall remain Provisional until the company receives Full & Final Payments.
- All discount will be valid subject to regular payments and shall be applicable at the time of possession.

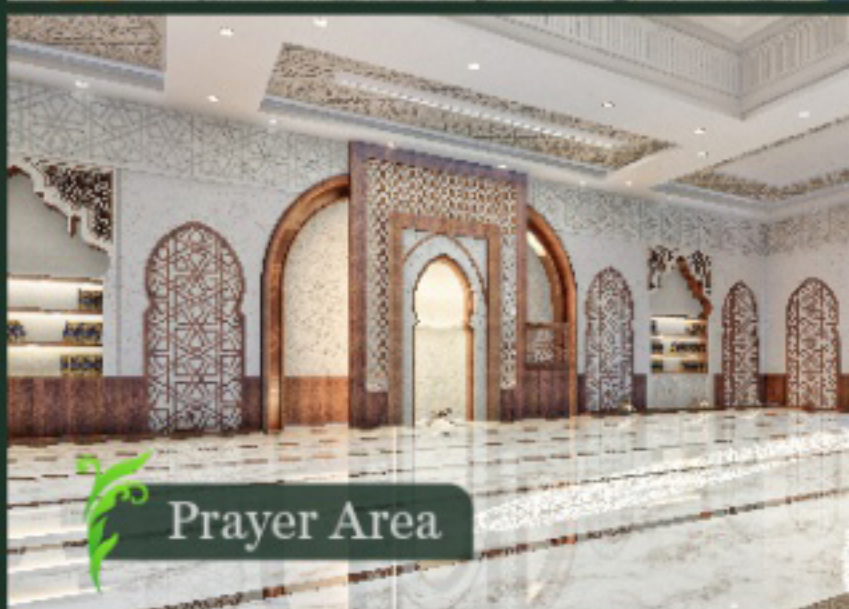
| | | |
|----------------------------------|---|--|
| <div></div> <div>Date</div> | <div></div> <div>Unit No.</div> | <div></div> <div>Read, Understand & Accepted</div> |
| <div></div> <div>Booked by</div> | <div></div> <div>Project Incharge</div> | <div></div> <div>Approved by Management</div> |



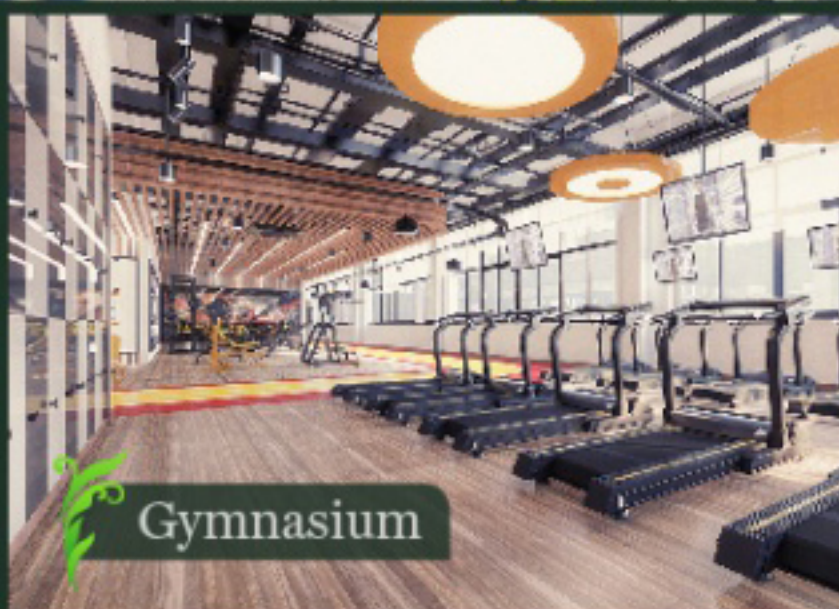
AMENITIES THAT WILL ADORN YOU AT EVERY EDGE



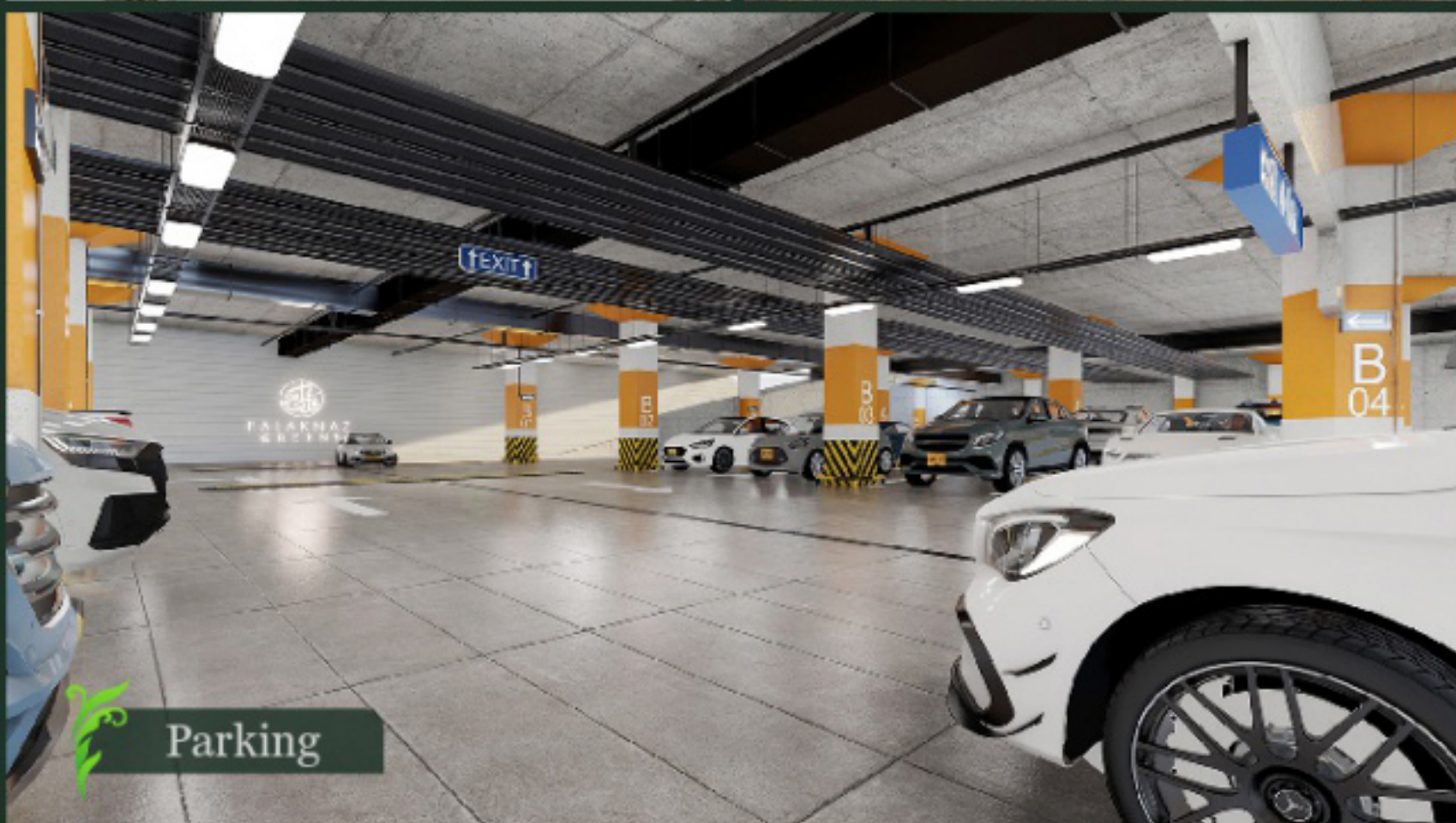
Pathways



Prayer Area



Gymnasium



Parking

Experience here the ecstasy of life with world class amenities which takes you through the glorious experience of living, with all luxuries, comfortableness and contentment.



URBAN LOCATION, SOPHISTICATED STYLE



A PROJECT OF:

SPONSORED BY:

FALAKNAZ
GROUP



RAF'S
HOLDING

MARKETED BY:

FALAK
MARKETING PLUS

Survey No. 79, 312 & 505, Shah Faisal Colony, Karachi

M: 0331 111 0486-90

f /FalakMarketing | **@** /FalakMarketing | www.falakmarketing.com